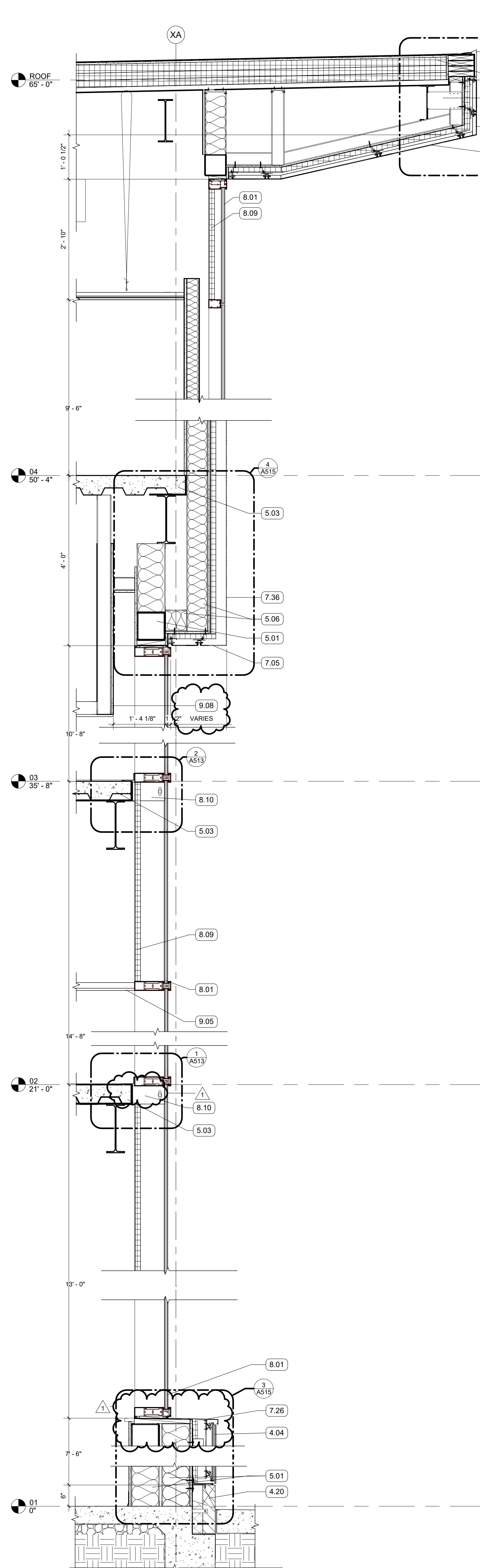
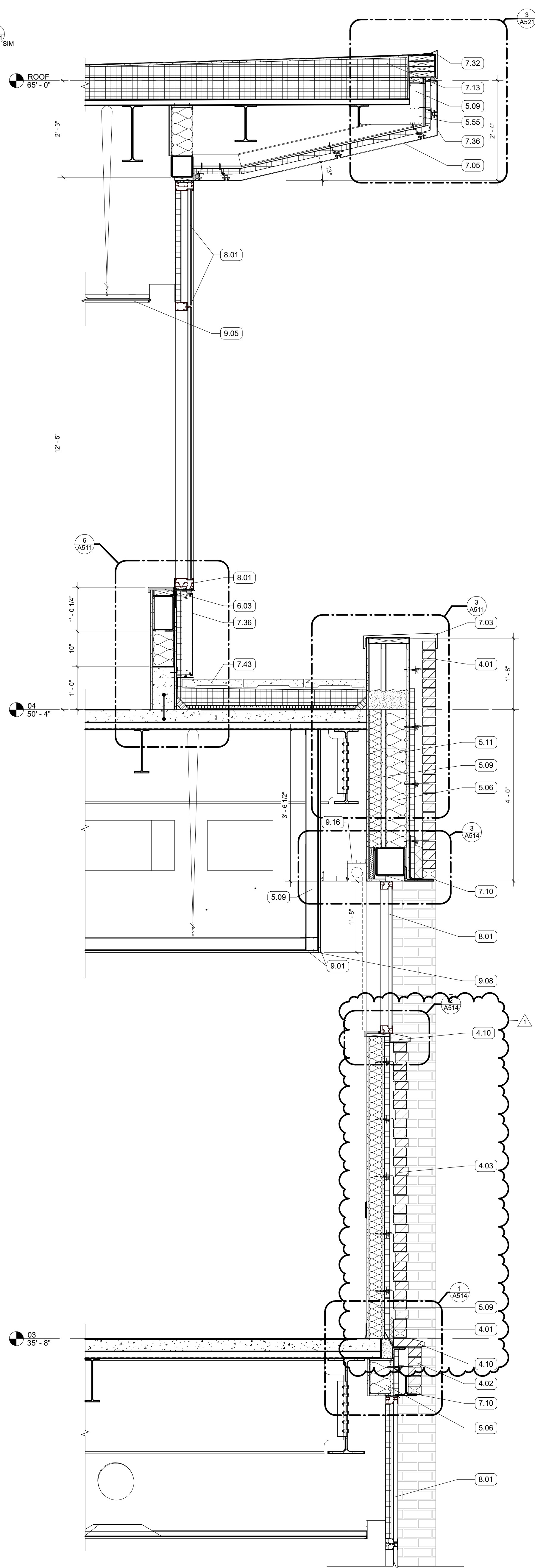


1 WALL SECTION
3/4" = 1'-0" | RE:1A/200



2 WALL SECTION
3/4" = 1'-0" | RE:1A/101



3 WALL SECTION
3/4" = 1'-0" | RE:4A/200

GENERAL NOTES

KEYNOTES

- 4.01 FACE BRICK VENEER, RUNNING BOND
- 4.02 4" RECESSED BRICK COURSE, RUNNING BOND, RECESS HORIZONTAL BANDS AN ADDITIONAL 1/2"
- 4.03 8" RECESSED BRICK COURSE, STACK BOND, PROJECT EVERY 3RD COURSE 1/2"
- 4.04 TERRA COTTA RAINSCREEN - STACK BOND, UNIT SIZE #1
- 4.07 TERRA COTTA RAINSCREEN, BASE CLOSURE ASSEMBLY
- 4.10 FACE BRICK, SPECIAL SHAPE SILL
- 4.20 CAST STONE PANEL
- 5.01 6" METAL STUD FRAMING
- 5.03 5 1/2" COMPOSITE MTL DECK AND CONCRETE SLAB
- 5.06 6" METAL STUD FRAMING
- 5.07 STRUCTURAL STEEL FRAMING
- 5.09 3 5/8" METAL STUD FRAMING
- 5.11 BRIDGE STUD AS REQ'D
- 5.55 UNIVERSAL BYPASS STEEL CLIP
- 6.03 SOLID SURFACE WINDOW STOOL WITH CHAMFERED EDGES
- 7.03 PREFINISHED COPING FLASHING
- 7.05 MCM PANEL SOFFIT
- 7.06 BATT INSULATION, SIZED TO MATCH STUD DEPTH
- 7.09 MINERAL FIBER BOARD INSULATION
- 7.10 THRU-WALL FLASHING, SLOPED TO DRAIN
- 7.11 BACKER ROD AND SEALANT
- 7.13 2 PLY SBS ROOFING SYSTEM
- 7.26 FORMED ALUMINUM SILL
- 7.32 GRAVEL STOP FASCIA
- 7.36 MCM PANEL
- 7.43 PEDESTAL PAVER - SEE ROOF SYSTEM IN ALTERNATE NO. 1
- 8.01 ALUM STOREFRONT, CURTAINWALL, OR WINDOW SYSTEM. SEE OPENING SCHEDULE
- 8.09 BACK PANEL
- 8.10 STEEL CURTAIN WALL ANCHOR W/ NON-METALLIC SHIMS
- 9.01 5/8" GYPSUM BOARD; SEE FINISH PLAN FOR FINISH MATERIAL
- 9.05 ACOUSTICAL CEILING TILE SYSTEM; SEE RCP AND FINISH SCHEDULE FOR TYPE
- 9.08 GYP BD CEILING ON METAL FRAMING
- 9.16 2-SIDED PERIMETER POCKET

ASHE I BROUSSARD I WEINZETTLE
ARCHITECTS

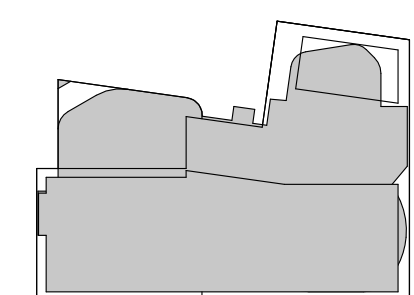
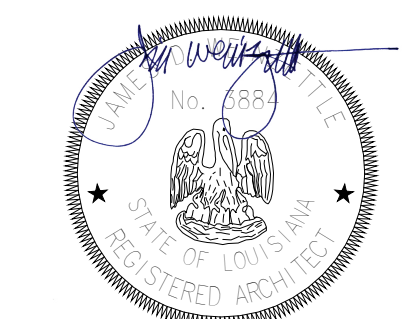
CONSULTANTS
Monsieur Butler & Associates, LLC
CABDO Landscape Architecture, LLC
Landscape Architecture
Fox Nease Engineering, LLC
Structural
Saba O'Brien
Mechanical, Plumbing, Electrical
Associated Design Group, Inc.
Electrical
Specialty Architects
Interior

ISSUE FOR BID
LOUISIANA STATE UNIVERSITY
ALEXANDRIA
DOWNTOWN HEALTH SERVICES CENTER
800 JACKSON ST.
ALEXANDRIA, LA 71301

PROJECT # 19-402-23-01
ARCH PROJECT # 2023.28 / 1531.00-23
SITE ID: NEW SITE CODE: 4-40-403
DATE OCTOBER 10, 2025

Ashe Broussard Weinzettelle Architects, LLP
Tipton Associates APAC, A Joint Venture
301 Jackson Street, Suite 205
Alexandria, LA 71301

NO. REVISION DATE
1 Addendum No. 2 12.03.2025



WALL SECTIONS

A352